

# TRUCK CRANE QY30V<sub>532.9</sub>



**ZOOMLION**

Zoomlion Heavy Industry Science & Technology Co.,Ltd.

Add:Zoomlion Overseas Building, No.613, 3rd Section, Furong Middle Road, Yuhua District, Changsha, Hunan, P.R.China 410205

Copyright © 2015 Zoomlion. All rights reserved. Reproduction and copying of any part of the Contents is not allowed for any purposes without Zoomlion's written approval.  
Note: No product coating appearance shall be subject to sample.



Printed in China. VN : EN-MC-201509-01

**ZOOMLION**

en.zoomlion.com

Courtesy of Crane Market

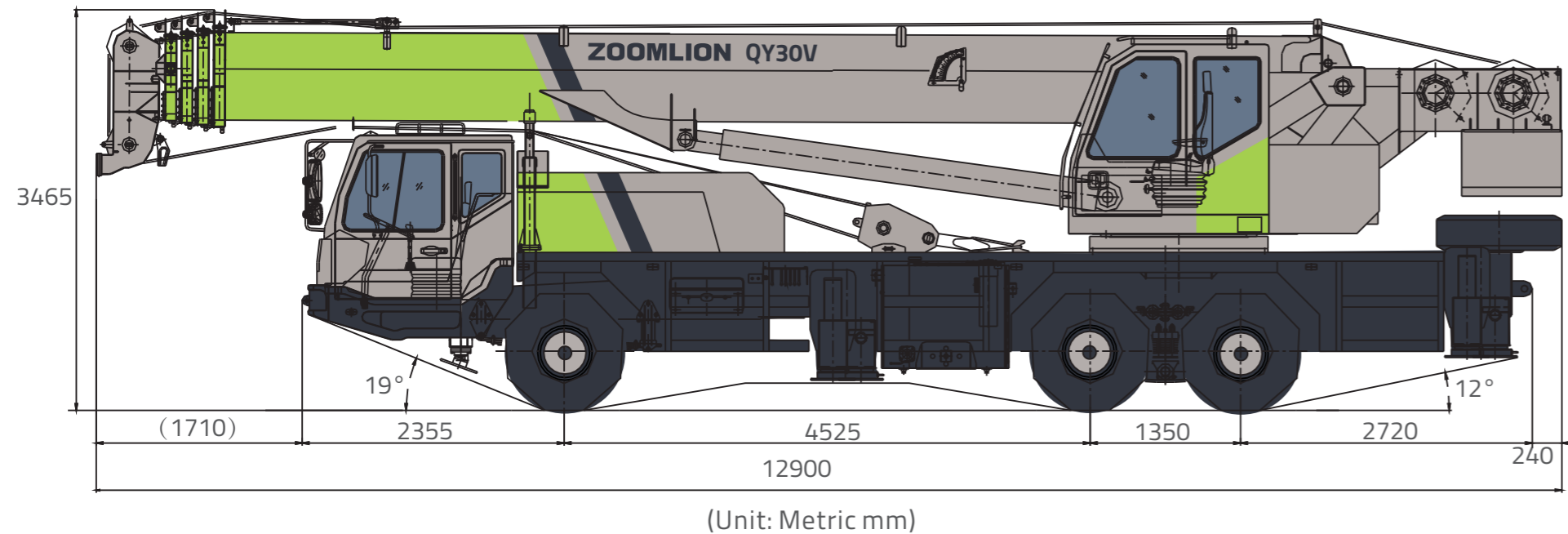
## Features

### Lifting capacity

Integrates Zoomlion more than 40 years experience in mobile cranes with advanced technology

1. Weight optimized and distortion-resistant design of low-alloy and high-strength steel with U-type boom profile providing the max lifting height up to 48.5m
2. Optimized ergonomic design improves operation safety and work efficiency
3. Robust and powerful 3-axle special purpose chassis for truck crane, offering excellent road& off-road capabilities and driving reliability.

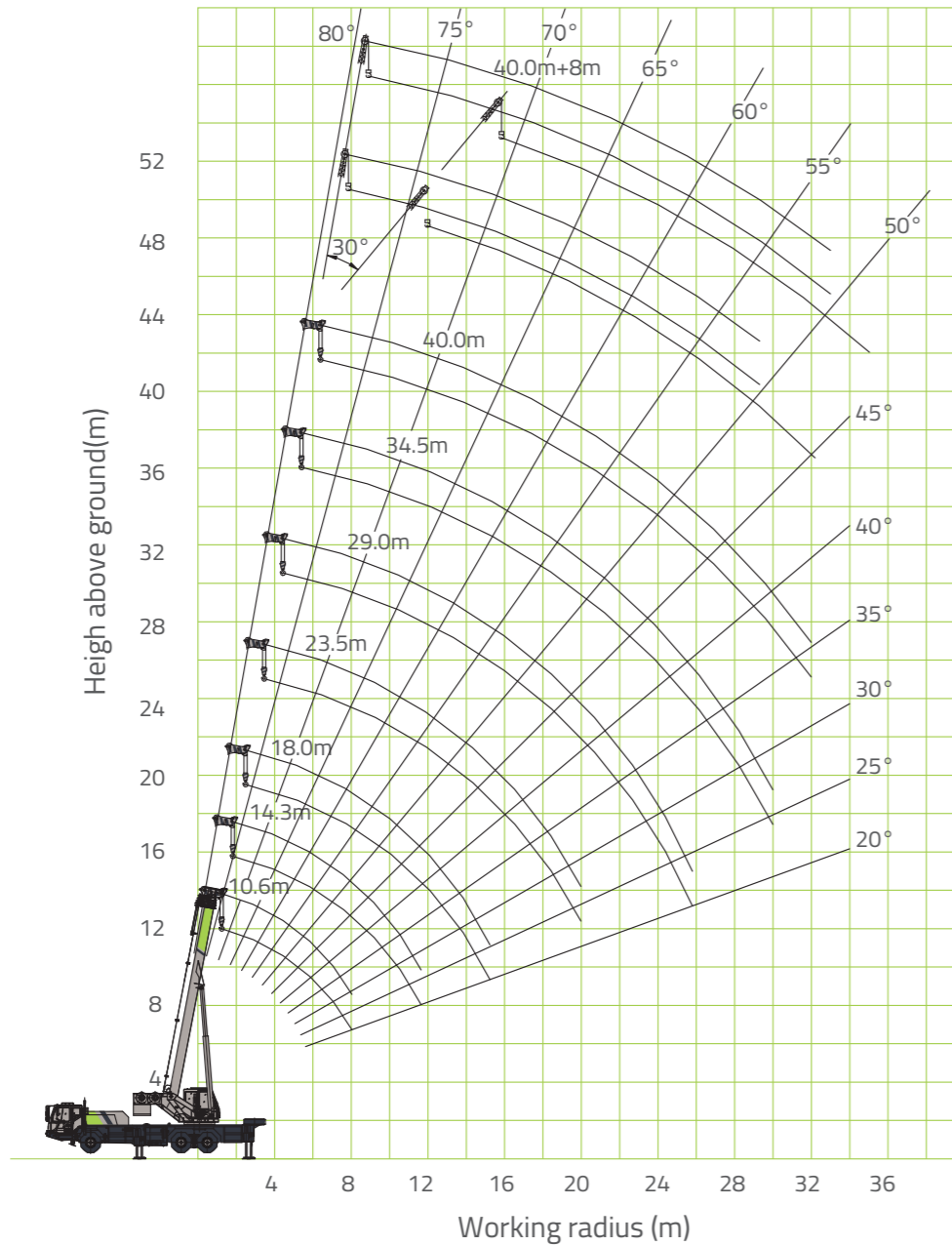
## Overall View



## Technical Data

	Item	Unit	Value	Remarks
Working performance	Max. rated lifting capacity	kg	30000	
	Max. load moment of basic boom	kN.m	1132	
	Max. load moment of Max. length main boom	kN.m	617.5	
	Max. lifting height of basic boom	m	11.1	
	Max. lifting height of main boom	m	40.5	These parameters do not include deflection of boom and jib.
	Max. lifting height of jib	m	48.5	
Working speeds	Max. hoist rope speed (Main winch)	m/min	120	At 4 <sup>th</sup> layer
	Max. hoist rope speed (Auxiliary winch)	m/min	100	At 2 <sup>nd</sup> layer
	Boom derricking up time	s	40	
	Boom telescoping out time	s	80	
	Slewing speed	r/min	0~2.2	
Driving	Max. driving speed	km/h	78	
	Max. gradeability	%	37	
	Min. turning diameter	m	≤22	
	Min. ground clearance	mm	220	
	Oil consumption per hundred kilometer	L	35	
Mass	Deadweight in driving condition	kg	32000	
	Complete vehicle kerb mass	kg	31870	
	Front axle load	kg	7000	
	Rear axle load	kg	25000	
Dimensions	Overall dimensions (L × W × H)	mm	12900×2500×3465	
	Longitudinal distance between outriggers	m	5.36	
	Transversal distance between outriggers	m	Fully extended:6.10 m Intermediately extended:4.20 m	
	Tail slewing radius	mm	3385	
	Main boom length	m	10.6~ 40	
	Main boom angle	°	-2 ~80	
	Jib length	m	8	
	Offset	°	0, 30	

## Lifting Height Chart



## Lifting Capacity Tables

Table 1

Unit: Metric kg

Working radius(m)	Main boom (m)						
	Telescopic cylinder I and outriggers completely extended, over side and over rear						
	10.6	14.3	18.0	23.5	29.0	34.5	40.0
3.0	30000	27000	22000				
3.5	30000	27000	22000				
4.0	28000	26000	20000	16500			
4.5	25000	24300	18600	15600			
5.0	23000	22400	17300	14700			
5.5	21000	20800	16000	13900	11700		
6.0	18500	18800	14800	12800	11000		
6.5	16500	17000	13900	12200	10500		
7.0	14600	14700	13000	11400	9900	8400	
7.5	13000	13200	11900	10400	9200	7900	
8.0	11600	11800	11300	9900	9000	7800	
9.0		9500	9400	8900	8200	7200	6300
10.0		7800	7700	8100	7400	6600	5750
11.0		6500	6400	7100	6750	6100	5350
12.0			5400	6000	6200	5700	4950
13.0			4500	5200	5450	5200	4750
14.0			3750	4450	4800	4800	4350
15.0				3800	4200	4450	4250
16.0				3200	3600	3850	3850
18.0				2400	2800	3000	3200
20.0					2100	2400	2600
22.0					1600	1850	2050
24.0					1150	1400	1600
26.0						1050	1250
28.0						750	950
30.0							700
I	0	3.7	7.4	7.4	7.4	7.4	7.4
II	0	0	0	5.5	11.0	16.5	22.0
Reevings	8	6	6	4	4	3	3
Hook	30t hook						

Table 2

Unit: Metric kg

Working radius(m)	Main boom (m)					
	Telescopic cylinder I intermediately extended and outriggers completely extended, over side and over rear					
	10.6	14.3	19.8	25.3	30.8	36.3
3.0	30000	27000				
3.5	30000	27000				
4.0	28000	26000	16500			
4.5	25000	24300	15500			
5.0	23000	22400	14500	11500		
5.5	21000	20800	14000	11500		
6.0	18500	18800	13500	11500		
6.5	16500	17000	12800	11500	8200	
7.0	14600	14700	12000	11500	8200	
7.5	13000	13200	11200	11500	8100	
8.0	11600	11800	10700	11500	8000	6300
9.0		9500	9700	10000	7400	6300
10.0		7800	8500	8800	6700	5750
11.0		6500	7200	7500	6300	5300
12.0			6200	6300	5700	4900
13.0			5200	5600	5400	4600
14.0			4600	4900	5000	4250
15.0			3900	4250	4600	4000
16.0			3400	3700	4000	3700
18.0				2900	3000	3100
20.0				2200	2350	2500
22.0				1700	1800	1900
24.0					1400	1450
26.0					1050	1150
28.0					750	900
30.0						650
I	0	3.7	3.7	3.7	3.7	3.7
II	0	0	5.5	11.0	16.5	22.0
Reevings	8	6	4	4	3	3
Hook	30t hook					

## Lifting Capacity Tables

Table 3 Unit: Metric kg

Working radius(m)	Main boom (m)				
	Telescopic cylinder I completely retracted and outriggers completely extended, over side and over rear				
	10.6	16.1	21.6	27.1	32.6
3.0	30000	16500			
3.5	30000	16500			
4.0	28000	16500	11500		
4.5	25000	16500	11500		
5.0	23000	16500	11500		
5.5	21000	16000	11500	8200	
6.0	18500	15800	11500	8200	
6.5	16500	15300	11500	8200	
7.0	14600	15000	11500	7500	
7.5	13000	13500	10800	7300	6300
8.0	11600	12000	10000	7000	6300
9.0		10000	9000	6300	5700
10.0		8500	8500	5800	5100
11.0		7200	7500	5200	4700
12.0		6200	6300	4900	4250
13.0		5200	5600	4500	4000
14.0		4600	4900	4100	3700
15.0			4250	3800	3200
16.0			3700	3600	3000
18.0			2900	3100	2600
20.0				2500	2300
22.0				2000	2000
24.0				1600	1700
26.0					1300
28.0					1100
30.0					
I	0	0	0	0	0
II	0	5.5	11.0	16.5	22.0
Reevings	8	6	4	3	3
Hook	30t hook				

Table 4 Unit: Metric kg

Working radius(m)	Main boom (m)						
	Telescopic cylinder I completely extended and outriggers intermediately extended, over side and over rear						
	10.6	14.3	18.0	23.5	29.0	34.5	40.0
3.0	30000	27000	21000				
3.5	26000	26000	19000				
4.0	23000	22000	18000	15000			
4.5	18000	18000	16000	14000			
5.0	16000	16000	15000	13000			
5.5	13000	13000	12500	12000	10500		
6.0	11000	11000	10500	11000	10000		
6.5	9500	9000	9000	9500	9200		
7.0	8200	8000	7500	8500	8600	8000	
7.5	6800	6600	6500	7200	7500	7300	
8.0	6200	4500	5500	6500	7000	7000	
9.0		3500	4500	5000	5500	6000	6000
10.0		2800	3500	4000	4500	4800	5000
11.0			2500	3200	3600	4000	4200
12.0			2000	2500	3000	3300	3500
13.0			1500	2000	2500	2600	3000
14.0			1100	1700	2000	2300	2500
15.0				1300	1600	1800	2100
16.0				1000	1300	1600	1800
18.0					800	1100	1200
20.0						700	900
22.0							600
I	0	3.7	7.4	7.4	7.4	7.4	7.4
II	0	0	0	5.5	11.0	16.5	22.0
Reevings	8	6	6	4	4	3	3
Hook	30t hook						

## Lifting Capacity Tables

Table 5 Unit: Metric kg

Working radius (m)	Main boom (m)					
	Telescopic cylinder I and outriggers intermediately extended, over side and over rear					
	10.6	14.3	19.8	25.3	30.8	36.3
3.0	30000	27000				
3.5	26000	26000				
4.0	23000	22000	16500			
4.5	18000	18000	15500			
5.0	16000	16000	14500	11500		
5.5	13000	13000	13500	11500		
6.0	11000	11000	11500	11500		
6.5	9500	9000	10000	10500	8200	
7.0	8200	8000	8500	9200	8200	
7.5	6800	6600	7200	7600	7800	
8.0	6200	4500	6500	7100	7400	6300
9.0		3500	5200	5700	6000	6000
10.0		2800	4200	4500	5000	5200
11.0			3500	3800	4100	4400
12.0			2700	3100	3500	3700
13.0			2300	2700	2900	3100
14.0			1900	2100	2500	2700
15.0			1500	1800	2100	2300
16.0			1200	1500	1800	1900
18.0				1000	1200	1400
20.0				700	850	1000
22.0						700
I	0	3.7	3.7	3.7	3.7	3.7
II	0	0	5.5	11.0	16.5	22.0
Reevings	8	6	4	4	3	3
Hook	30t hook					

Table 6 Unit: Metric kg

Working radius (m)	Main boom (m)				
	Telescopic cylinder I completely retracted and outriggers intermediately extended, over side and over rear				
	10.6	16.1	21.6	27.1	32.6
3.0	30000	16500			
3.5	26000	16500			
4.0	23000	16500	11500		
4.5	18000	16500	11500		
5.0	16000	16500	11500		
5.5	13000	13800	11500	8200	
6.0	11000	11300	11500	8200	
6.5	9500	10000	10300	8000	
7.0	8200	8300	9000	7400	
7.5	6800	7400	7800	7000	6300
8.0	6200	6500	6800	6700	6100
9.0		5000	5500	6000	5300
10.0		4000	4500	5000	4800
11.0		3600	3800	4200	4500
12.0		3000	3000	3500	3800
13.0		2500	2500	3000	3200
14.0			2200	2500	2800
15.0			1900	2100	2300
16.0			1600	1800	2000
18.0			1000	1400	1500
20.0				900	1100
22.0				700	800
I	0	0	0	0	0
II	0	5.5	11.0	16.5	22.0
Reevings	8	6	4	3	3
Hook	30t hook				

Table 7 Unit: Metric kg

Main boom angle (°)	Main boom + Jib (m)			
	Outriggers completely extended			
	40.0+8.0			
	0°		30°	
	Over side and over rear	Over front	Over side and over rear	Over front
80	3000	3000	1500	1500
78	3000	3000	1500	1500
76	3000	3000	1500	1500
74	2900	2750	1500	1500
72	2800	2250	1450	1450
70	2650	1800	1400	1400
68	2500	1450	1350	1200
66	2250	1150	1300	980
64	1900	900	1270	760
62	1650	660	1240	580
60	1400	450	1210	380
58	1200		1080	
56	1030		930	
54	870		800	
52	730		650	
50	600		530	
45	320			
1 reeving				
3t hook				